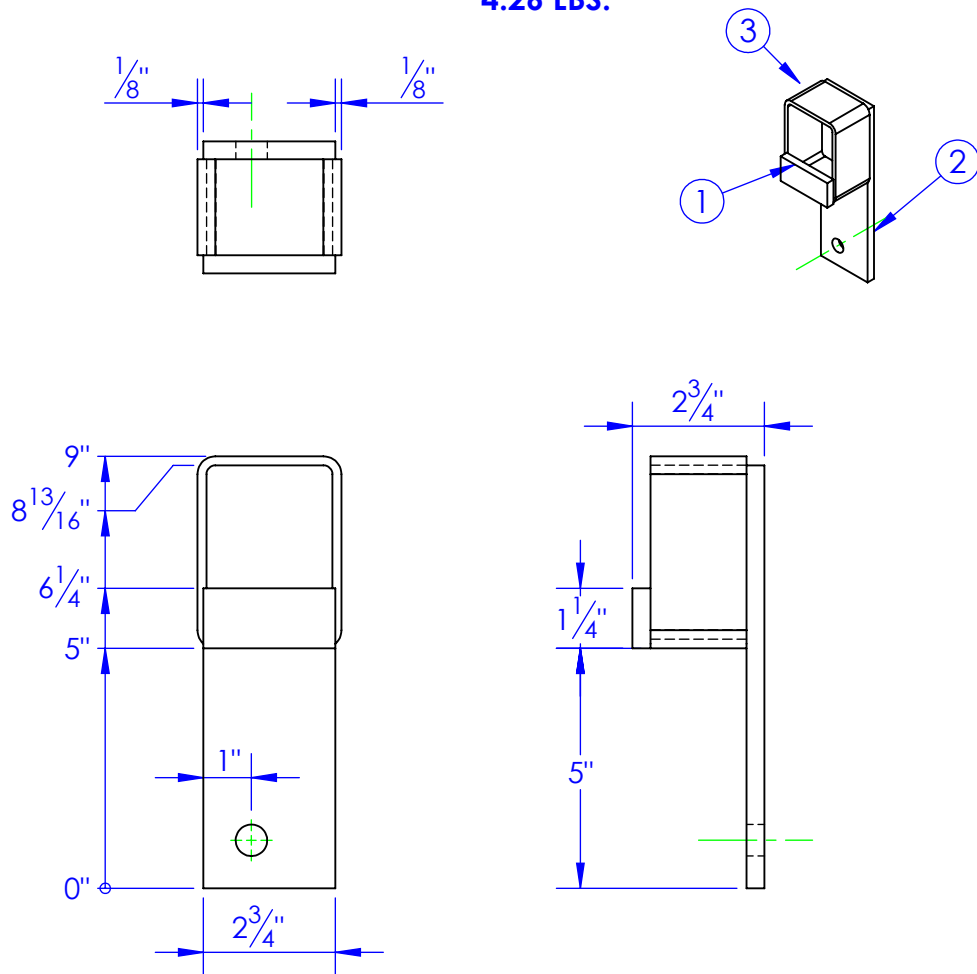


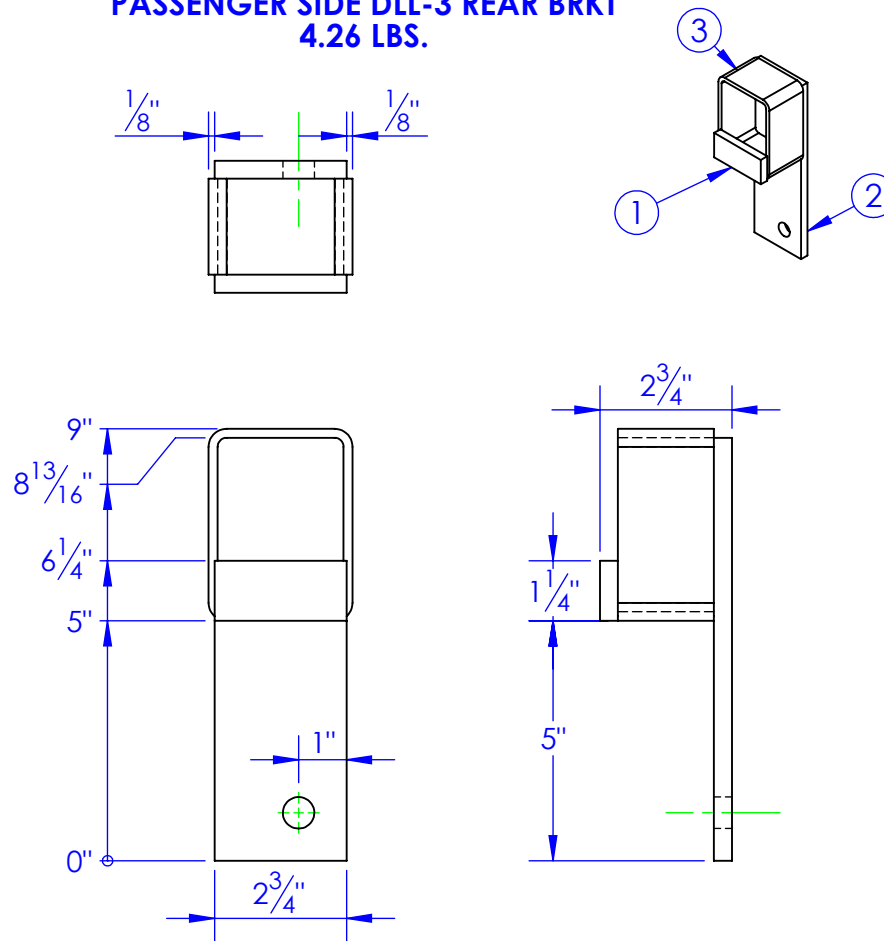
ITEM NO.	PART NUMBER	DESCRIPTION	MATERIAL	DRAWING #	QTY.
1	FI .375 X 1.25 L 2.75	LENGTH: 2-3/4"	FI 3/8x1-1/4"	STOCK	1
2	FP-LL STRAP 8.8125	LEVEL LOK MOUNTING STRAP 8-13/16"	ST-FI 3/8x2-3/4"	90-2826	1
3	FP-RT 4X3X.1875 L 2	LENGTH 2"	RT 4x3x3/16"	STOCK	1

**FP-DLL3-3 DS
DRIVER SIDE DLL-3 REAR BRKT
4.26 LBS.**



ITEM NO.	PART NUMBER	DESCRIPTION	MATERIAL	DRAWING #	QTY.
1	FI .375 X 1.25 L 2.75	LENGTH: 2-3/4"	FI 3/8x1-1/4"	STOCK	1
2	FP-LL STRAP 8.8125	LEVEL LOK MOUNTING STRAP 8-13/16"	ST-FI 3/8x2-3/4"	90-2826	1
3	FP-RT 4X3X.1875 L 2	LENGTH 2"	RT 4x3x3/16"	STOCK	1

**FP-DLL3-3 PS
PASSENGER SIDE DLL-3 REAR BRKT
4.26 LBS.**



REV.	REVISIONS	DATE
A	UPDATED TO NEW DWG FROM 10-1832 B	1/22/2013

PROPRIETARY AND CONFIDENTIAL
THE INFORMATION CONTAINED IN THIS DRAWING IS THE SOLE PROPERTY OF TRIPLE C INC. ANY REPRODUCTION IN PART OR AS A WHOLE WITHOUT THE WRITTEN PERMISSION OF TRIPLE C INC. IS PROHIBITED.

DIMENSIONS ARE IN INCHES TOLERANCES: FRACTIONAL $\pm 1/16$ ANGULAR: MACH ± 1 BEND \pm TWO PLACE DECIMAL ± 010 THREE PLACE DECIMAL ± 005		NAME	DATE
DRAWN		HEATH	1/23/2013
PART #		SEE DWG	
ASM #			
COMMENTS:			
MATERIAL --		REAR BRACKET DLL-3 WLDMT.	
DO NOT SCALE DRAWING			

P.O. BOX 248, SABETHA, KS 66534			
TRIPLE C INC.			
SIZE A	DWG. NO. 90-1823-28	REV. A	
SCALE:1:4	WEIGHT: --	SHEET 1 OF 1	